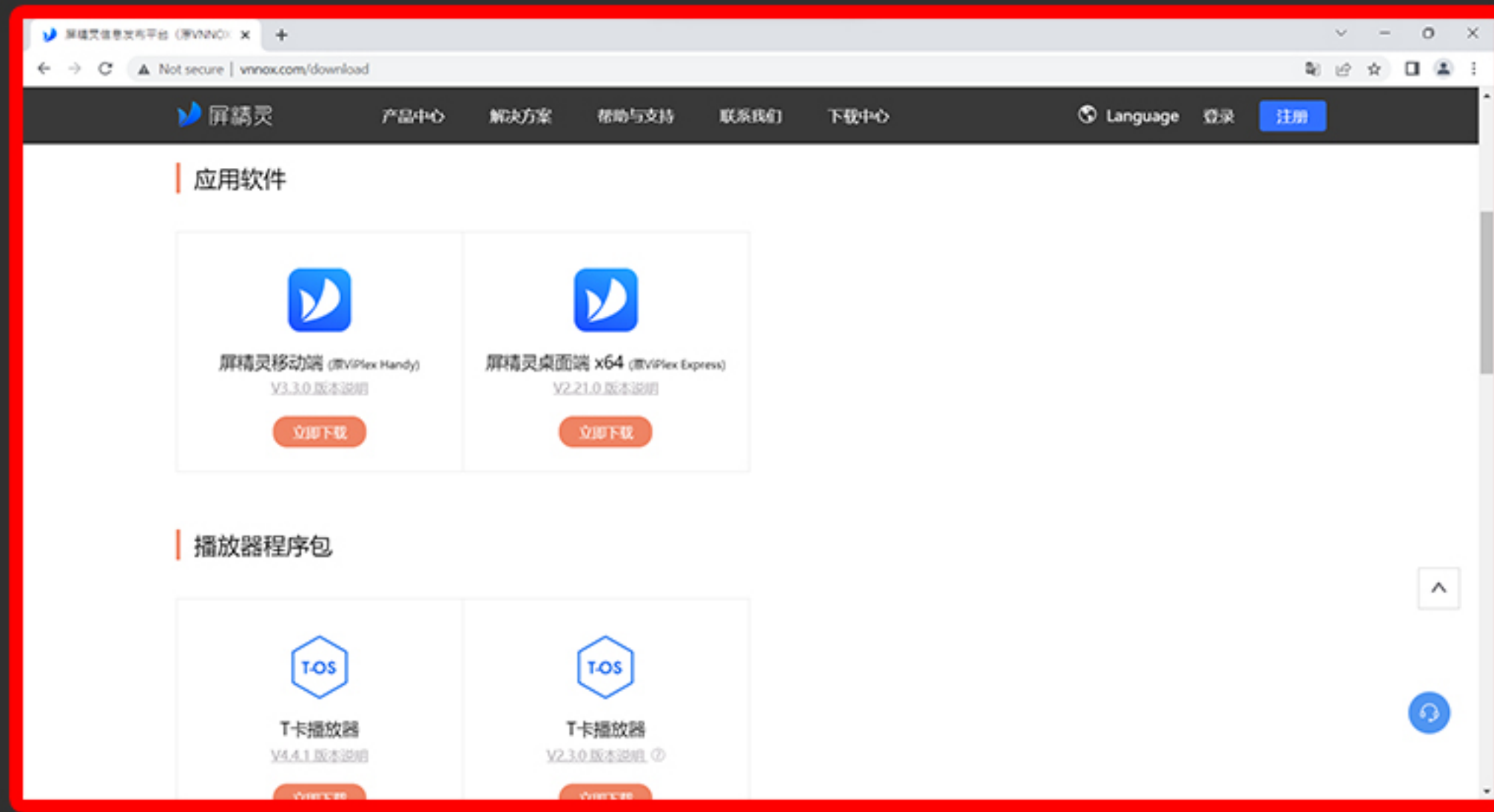


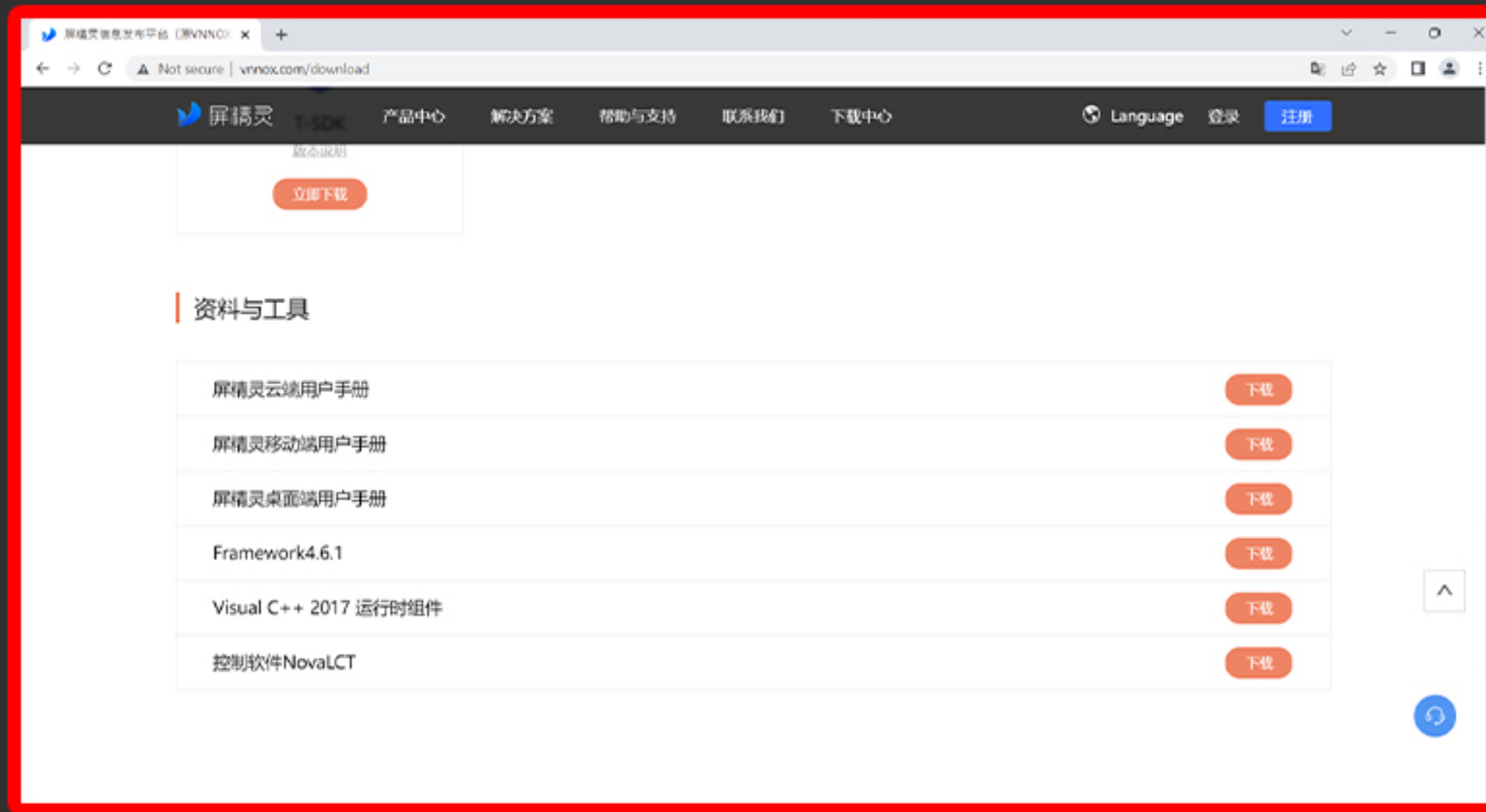
# Downloading NOVALCT

**ENTER** <http://vnox.com/downloads> into your Internet browser.



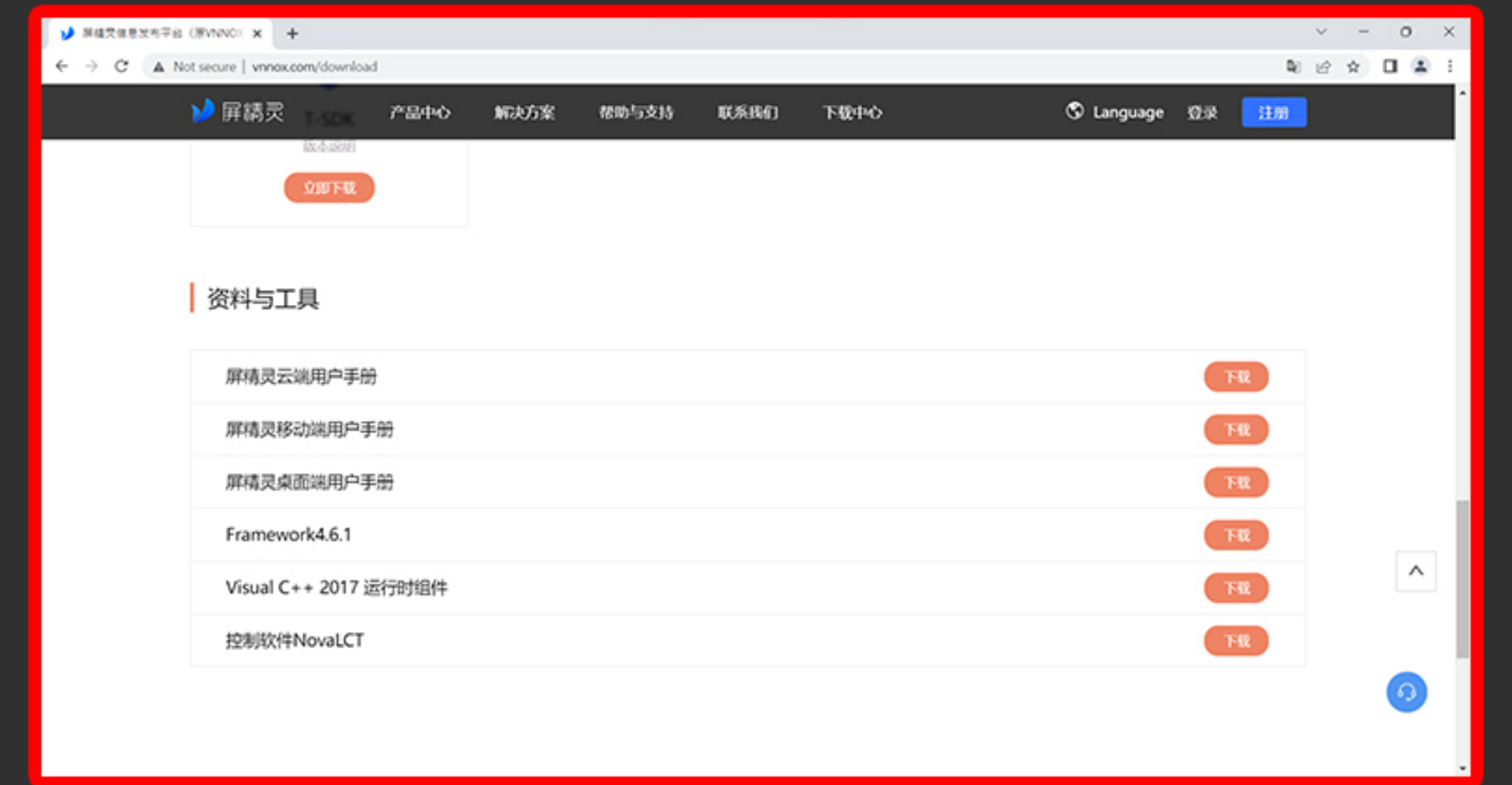
**STEP 1**

**SCROLL DOWN** to the bottom of the page to “控制软件NovaLCT”.



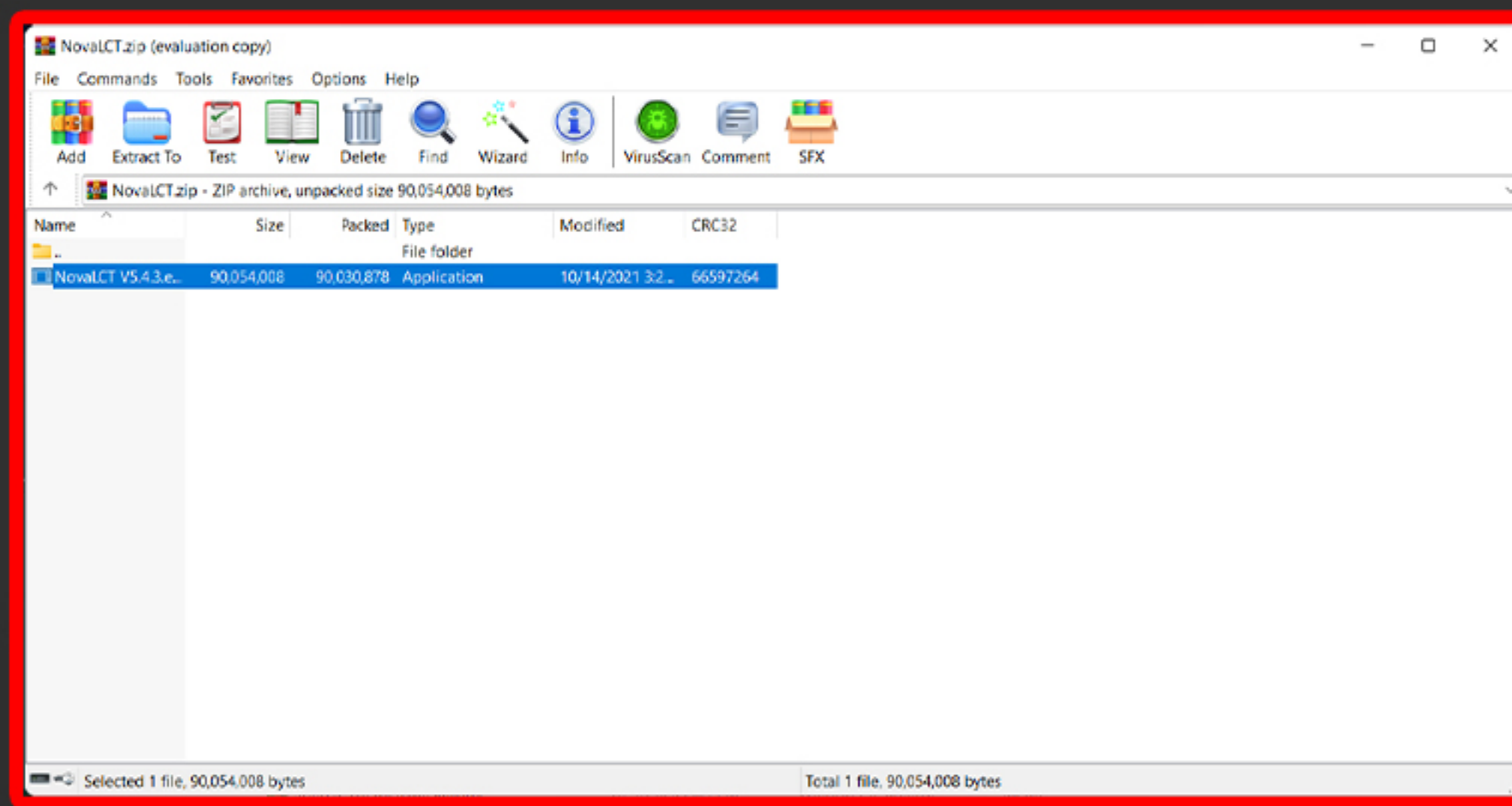
**STEP 2**

**DEPRESS** “下载”.



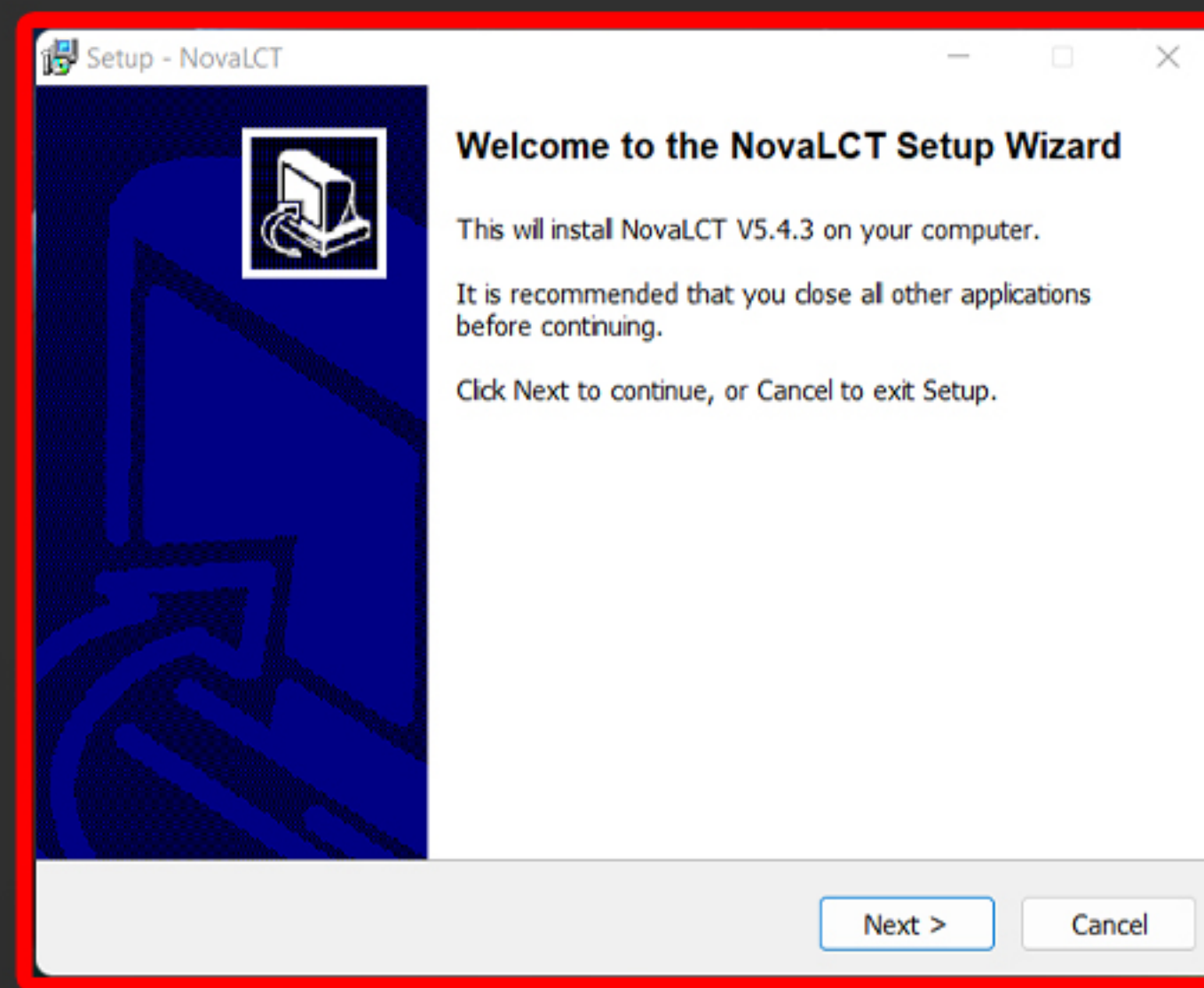
**STEP 3**

**DEPRESS** the “NovaLCT” on the bottom left. If a dialogue box does not automatically open, **DEPRESS** “NovaLCT V5.4.3.exe” in the ‘Downloads’ folder.



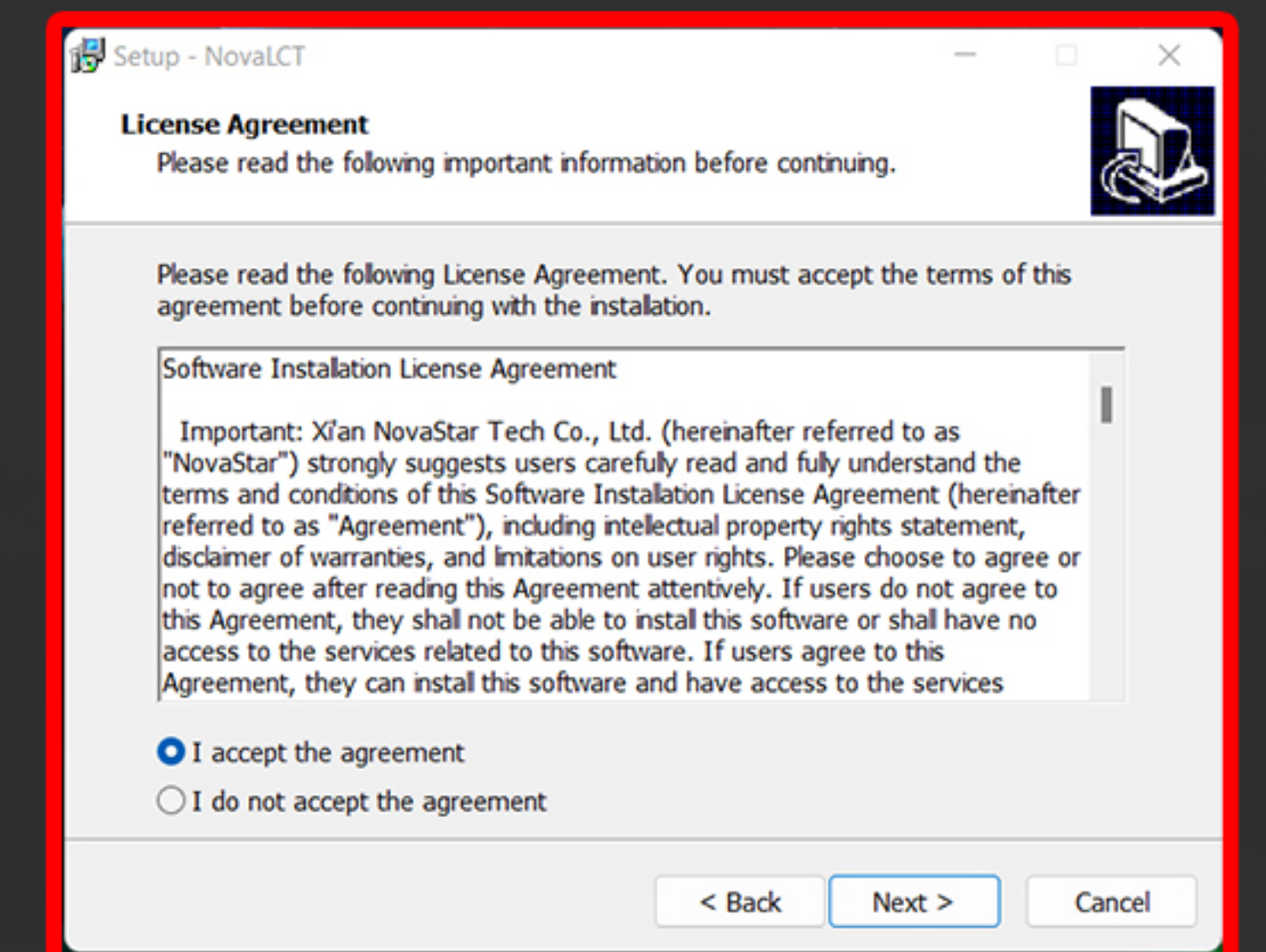
**STEP 4**

**DEPRESS** the “Next” button.



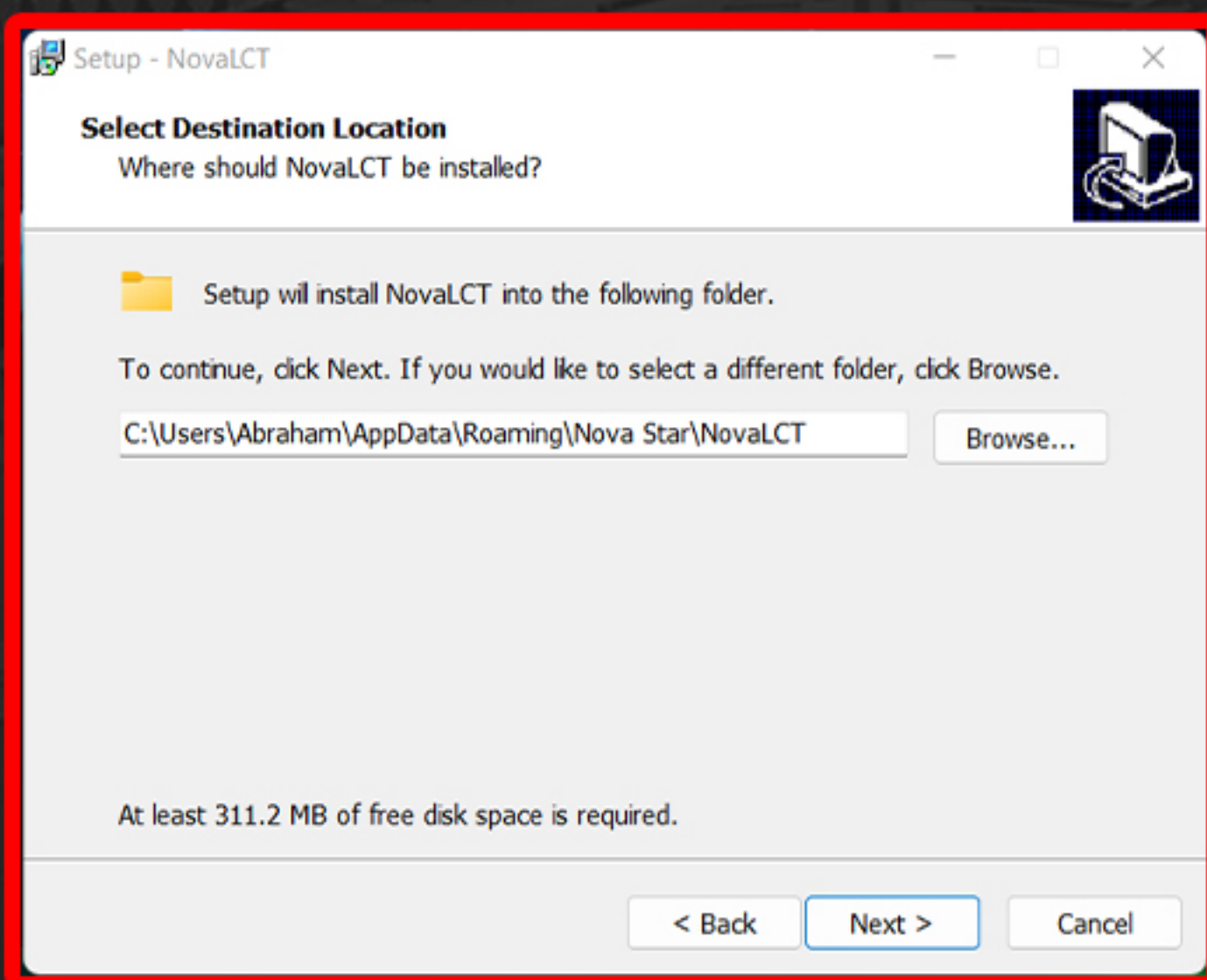
**STEP 5**

**DEPRESS** the “I accept the agreement” button.



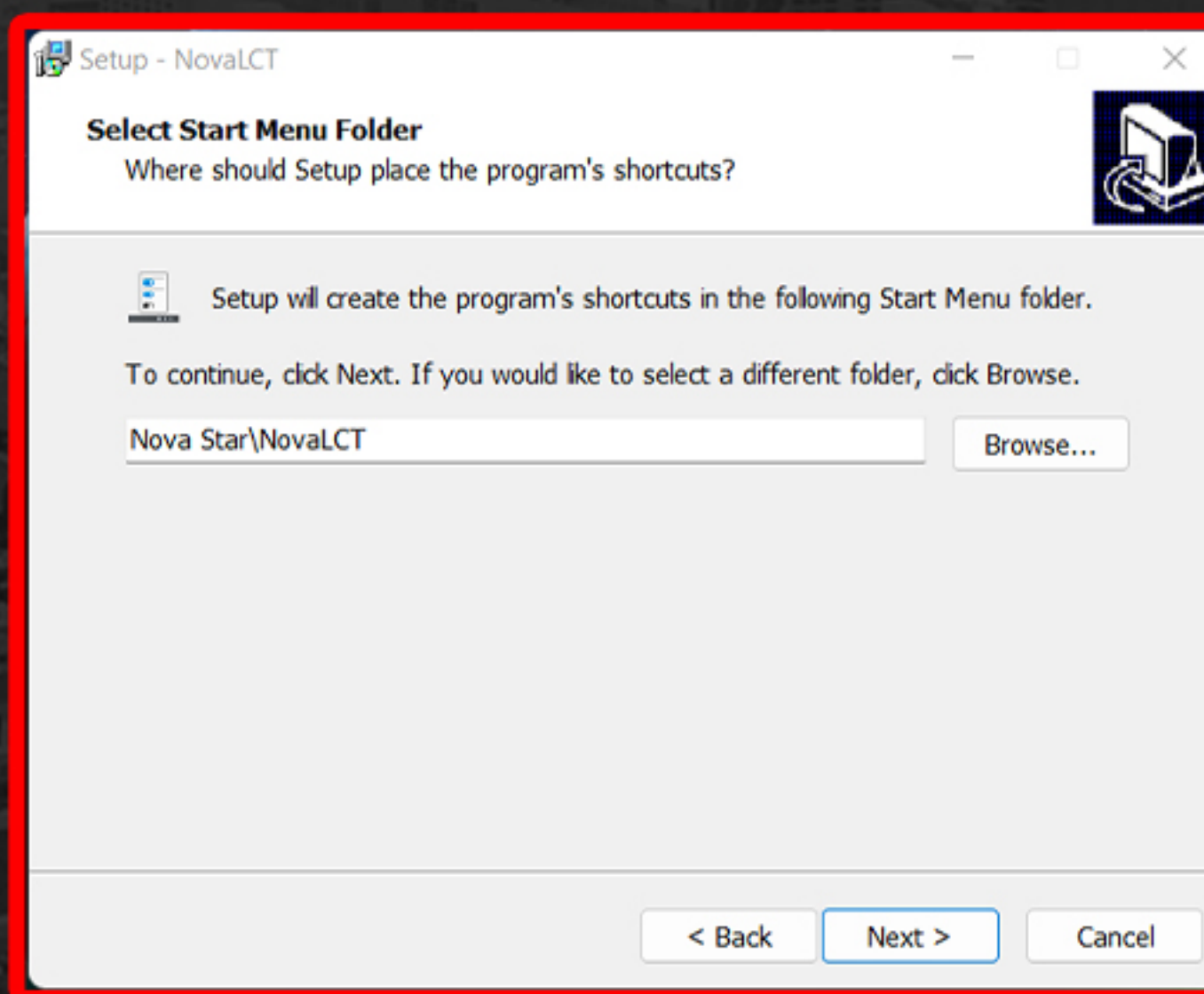
**STEP 6**

**DEPRESS** the “Next” button.



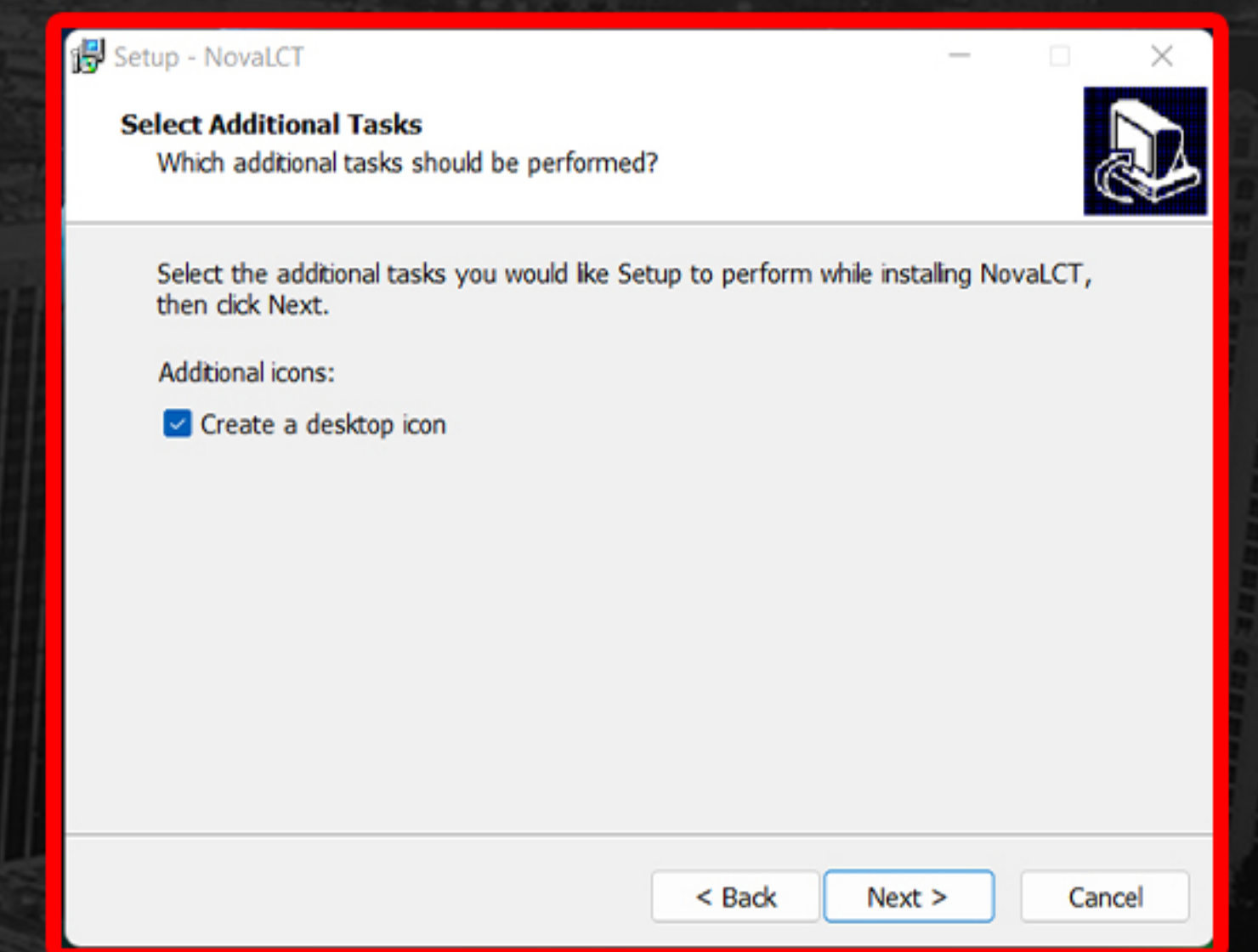
**STEP 7**

**DEPRESS** the “Next” button.



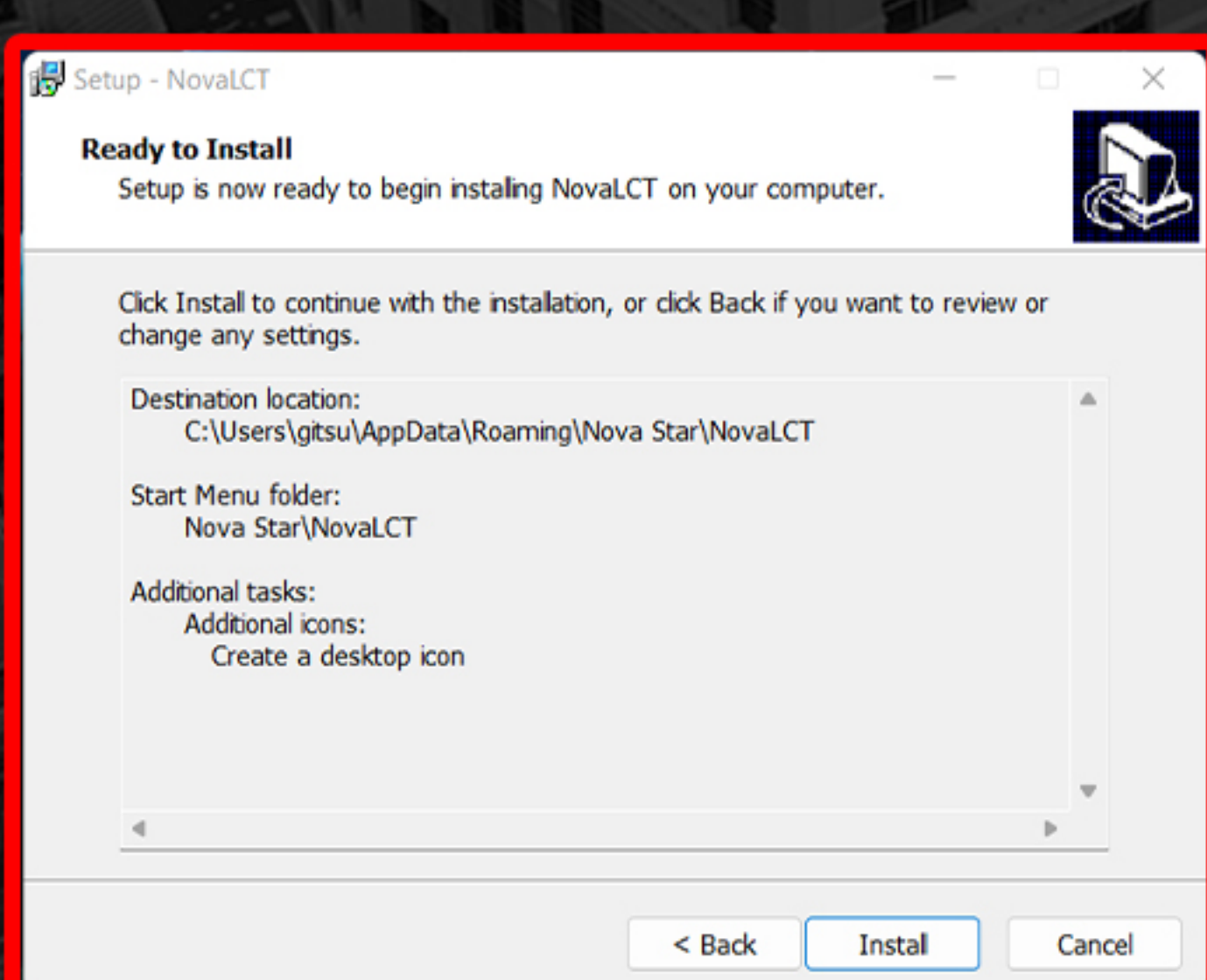
**STEP 8**

**DEPRESS** the “Next” button.



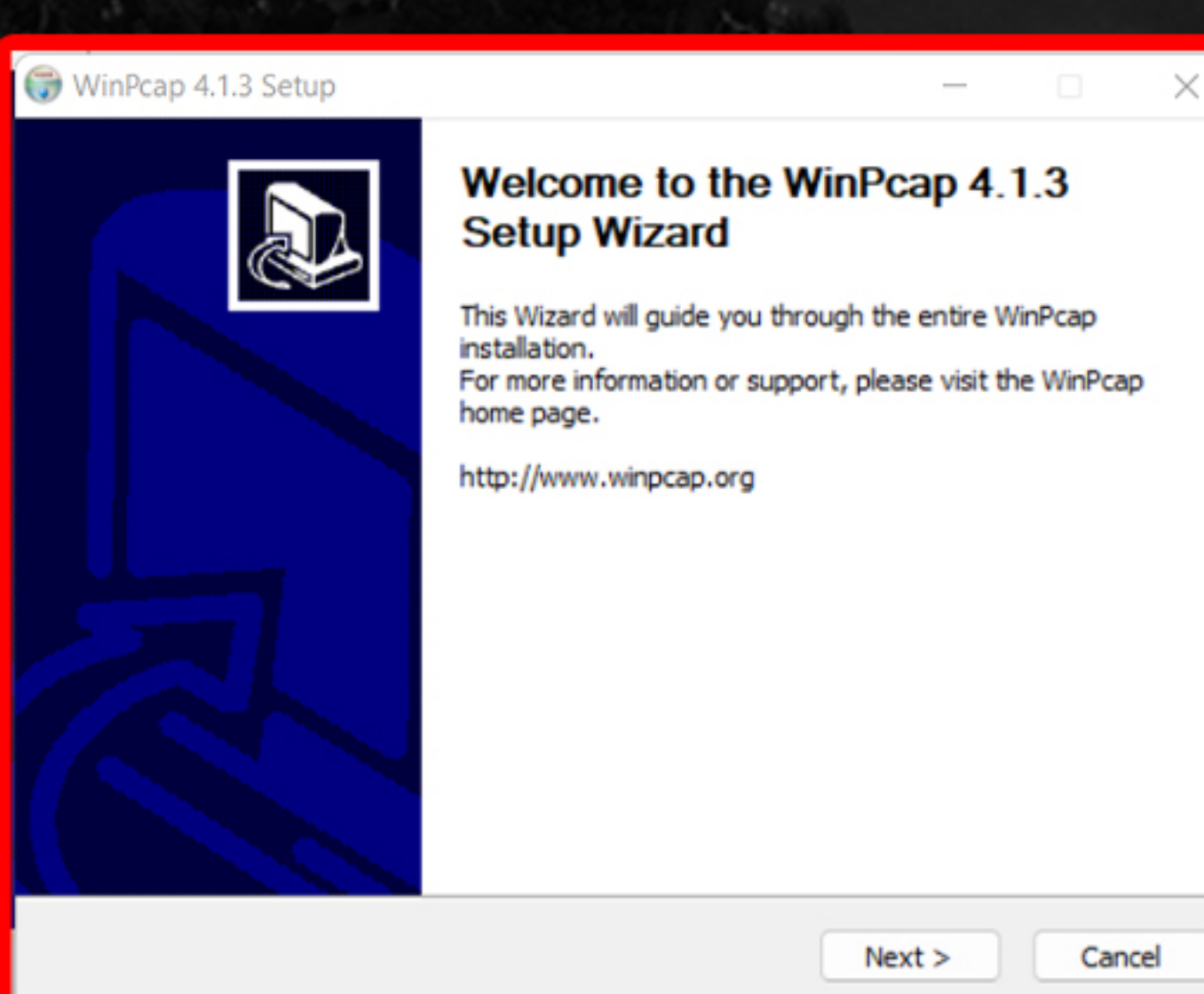
**STEP 9**

**DEPRESS** the “Next” button.



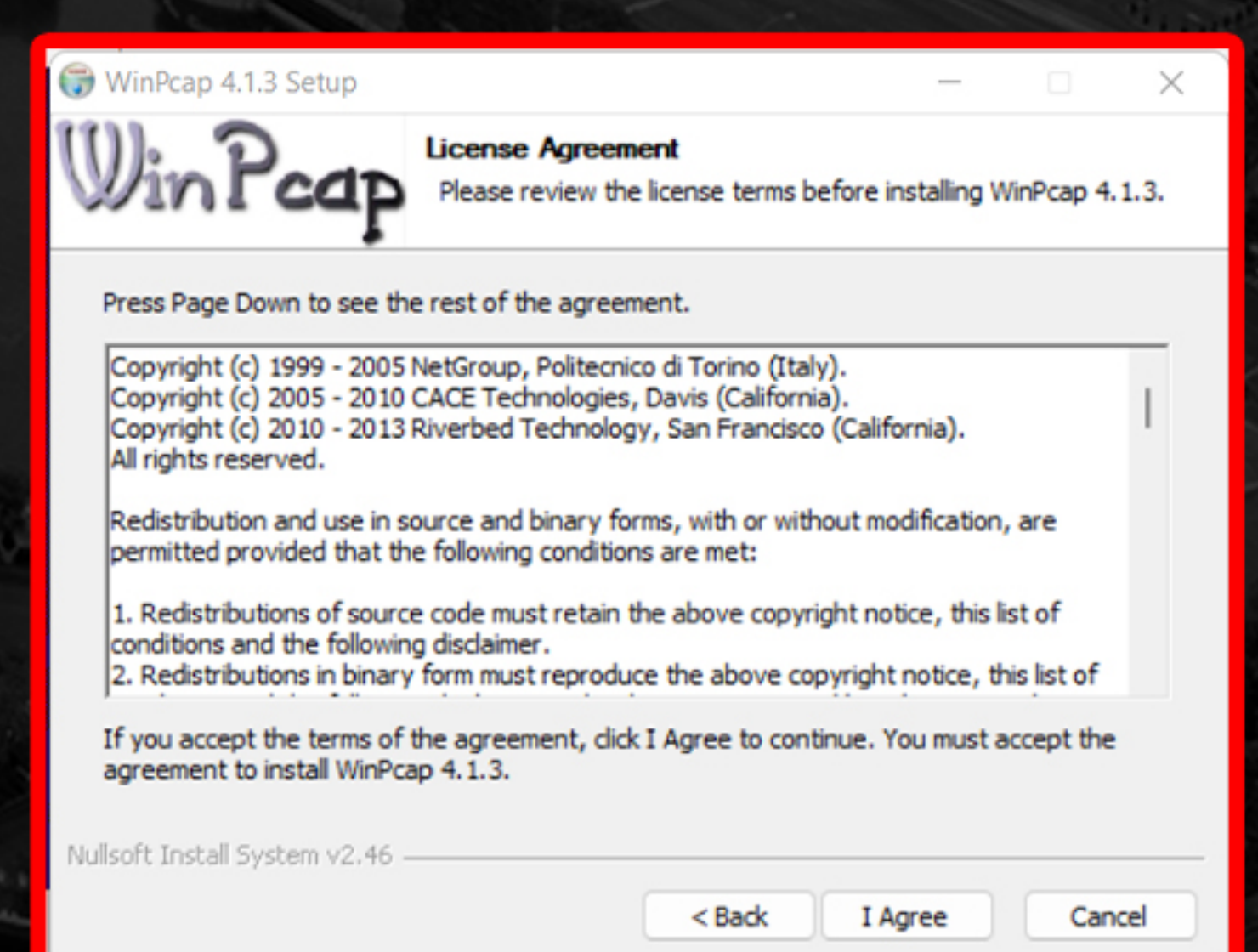
**STEP 10**

**DEPRESS** the “Install” button.



**STEP 11**

WinPcap will ‘Open’, **DEPRESS** the “Next” button.



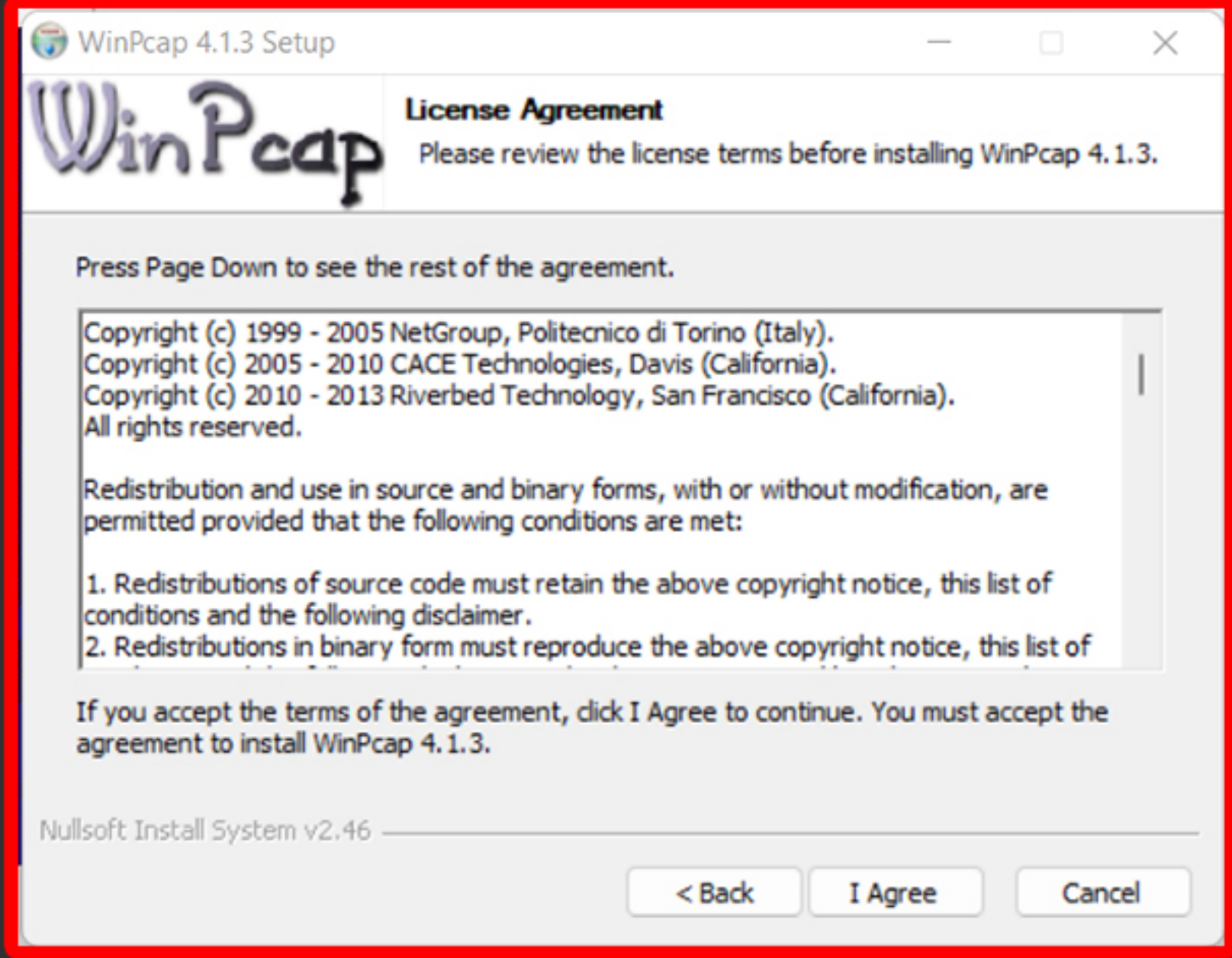
**STEP 12**





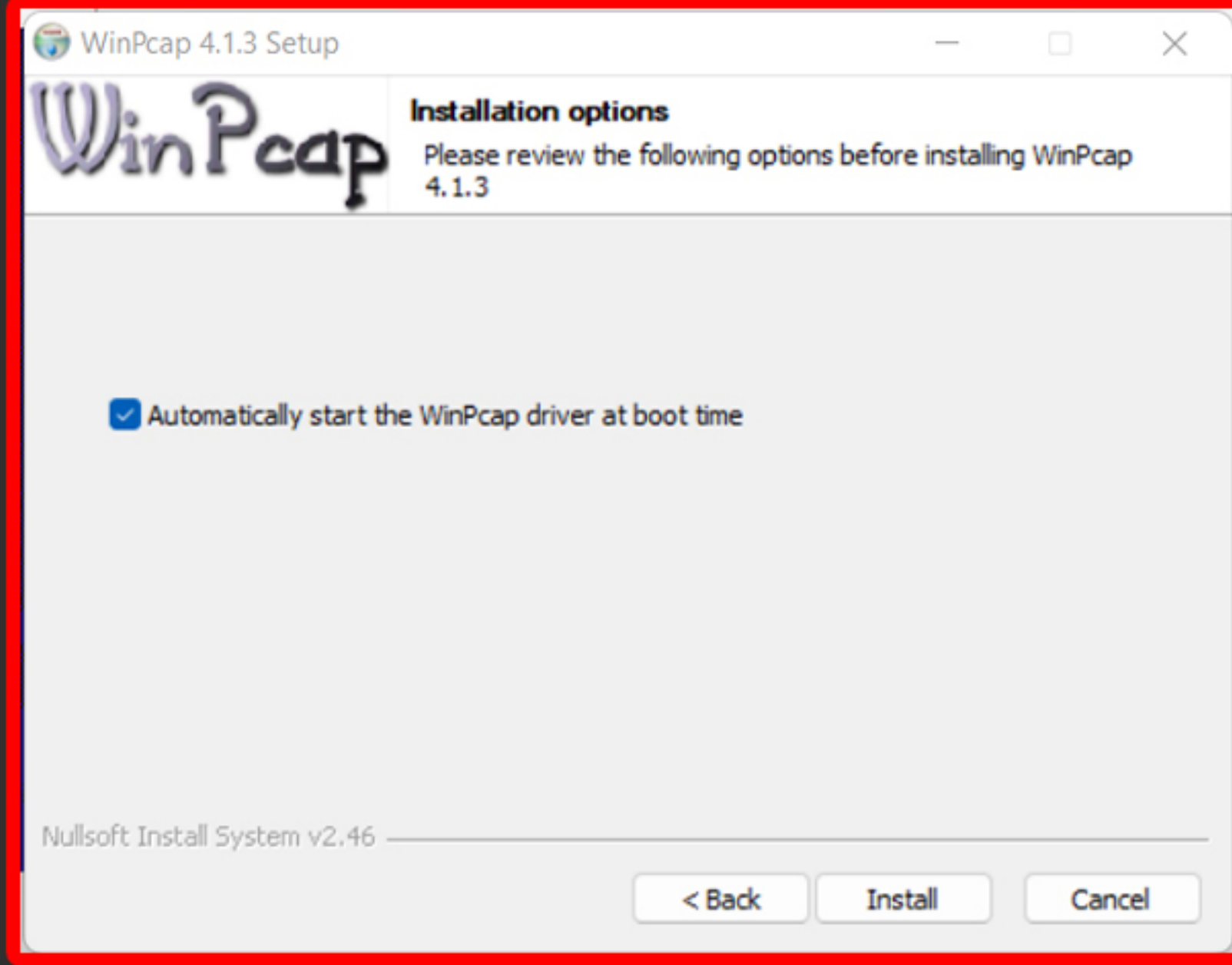
# Downloading NOVALCT

DEPRESS the "I Agree" button.



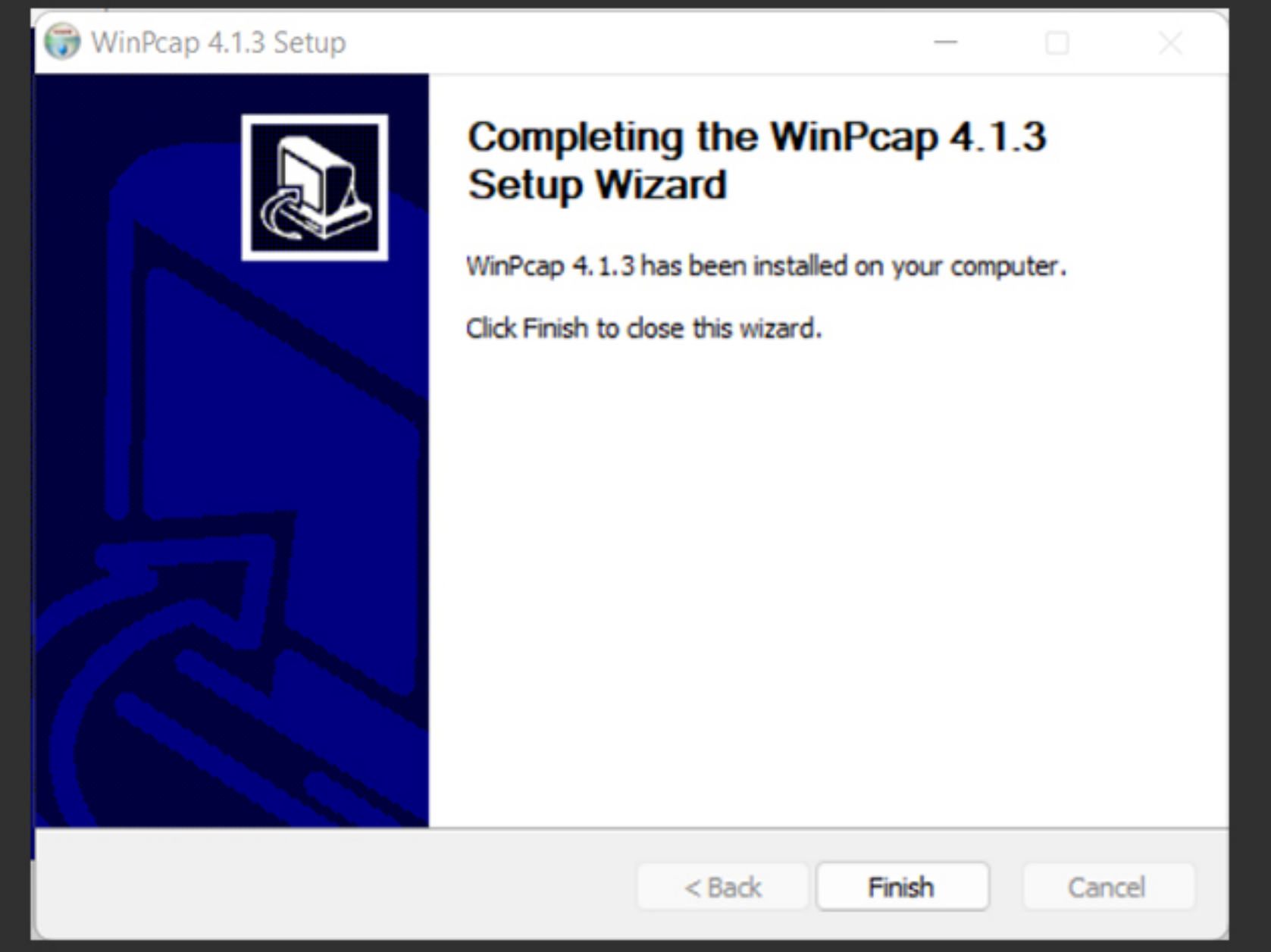
STEP 13

DEPRESS the "Install" button.



STEP 14

DEPRESS the "Finish" button for WinPcap.



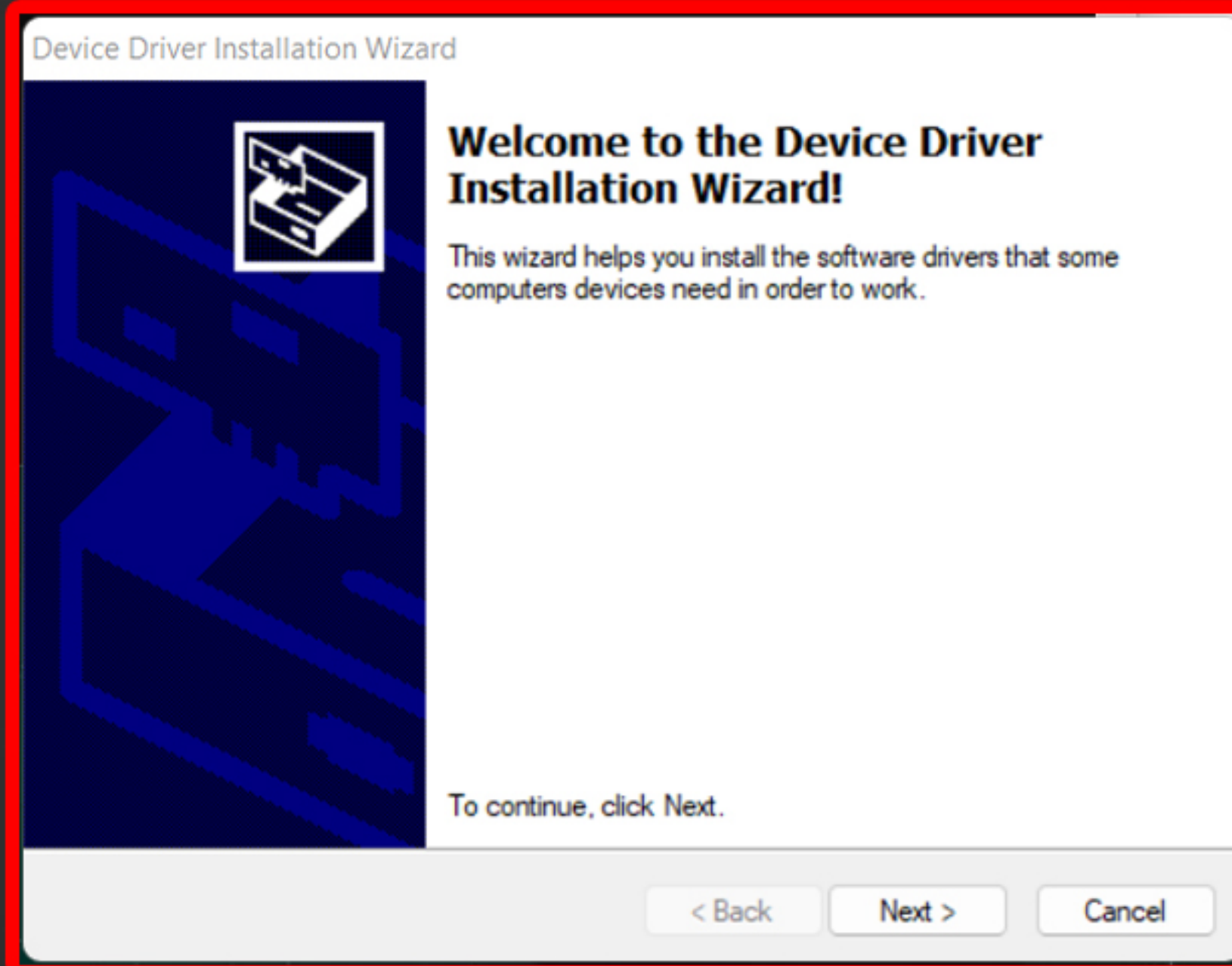
STEP 15

Silicon Laboratories will appear  
DEPRESS the "Install" button.



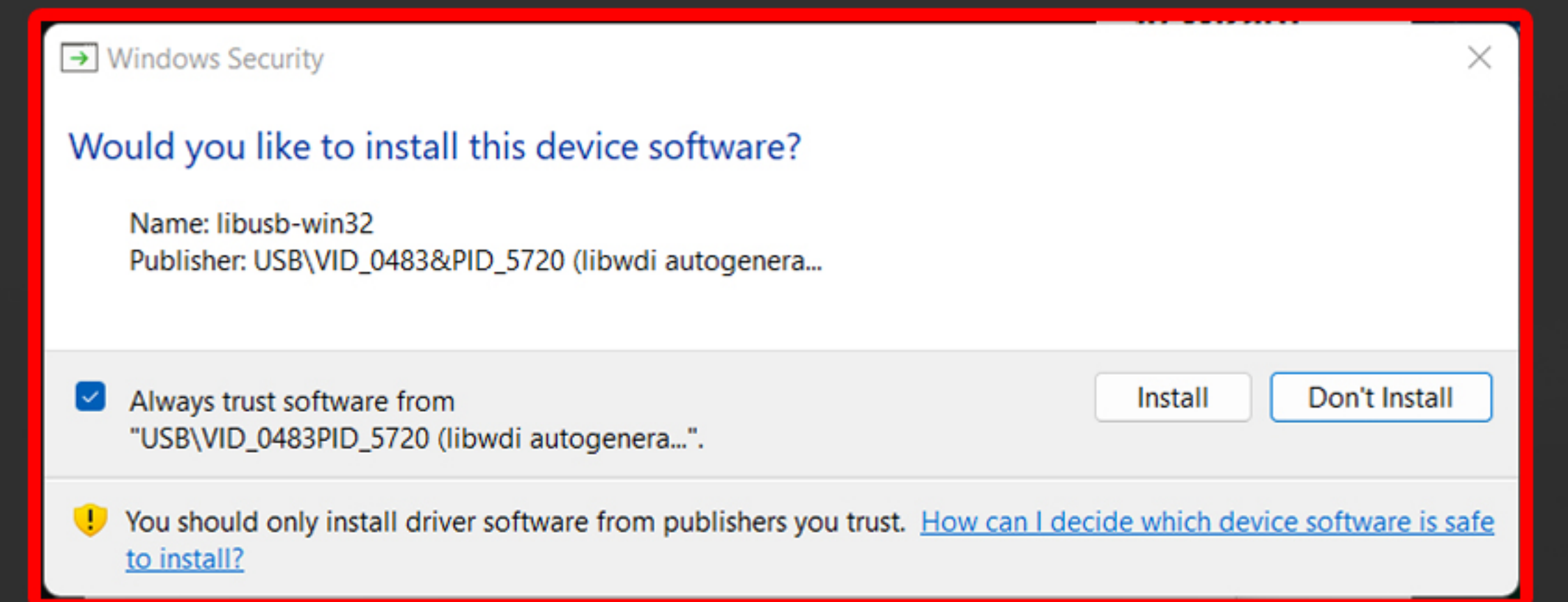
STEP 16

The Device Driver will appear.  
DEPRESS the "Next" button.



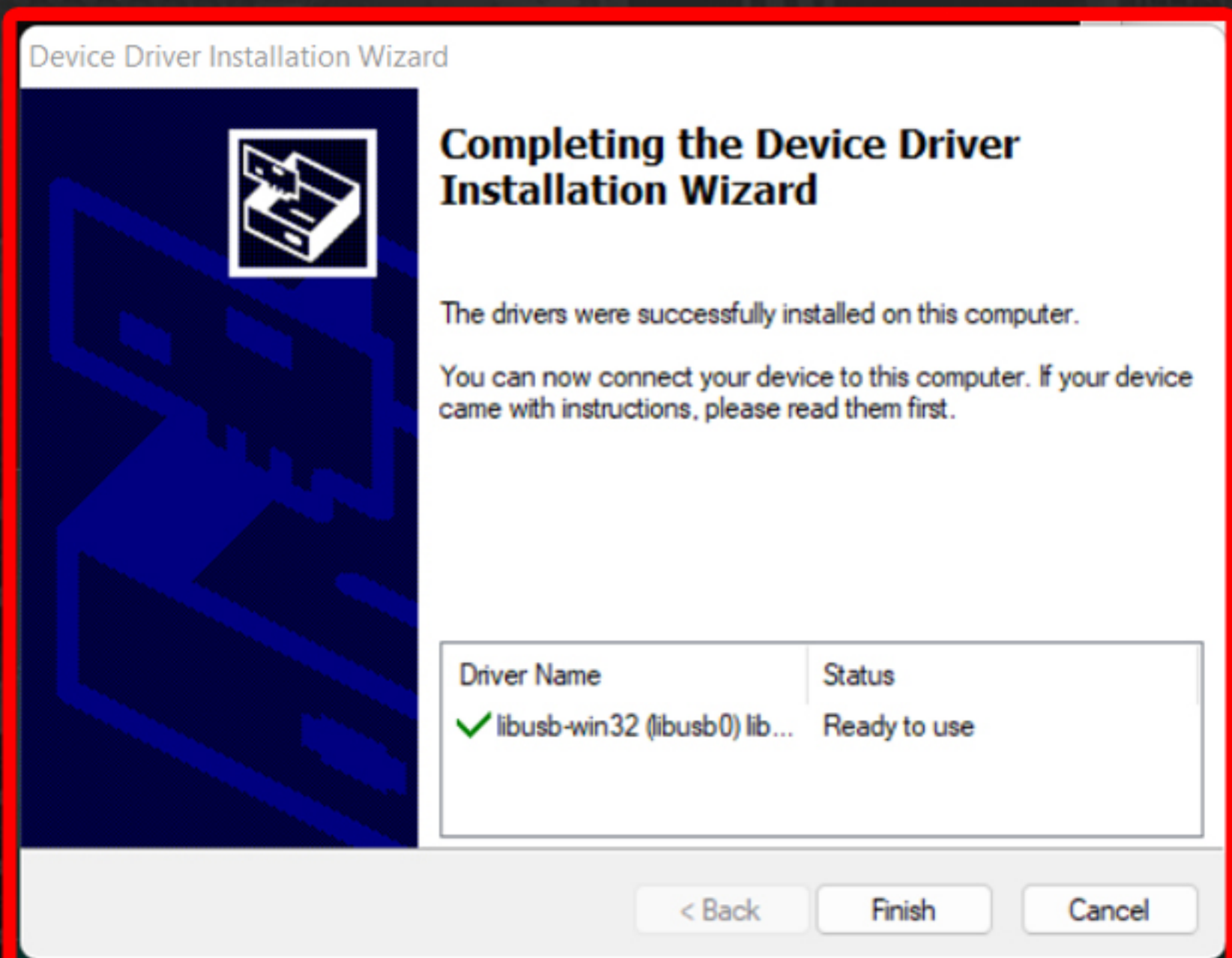
STEP 17

It will ask "Would you like to install this device software"  
DEPRESS the "Install" button.



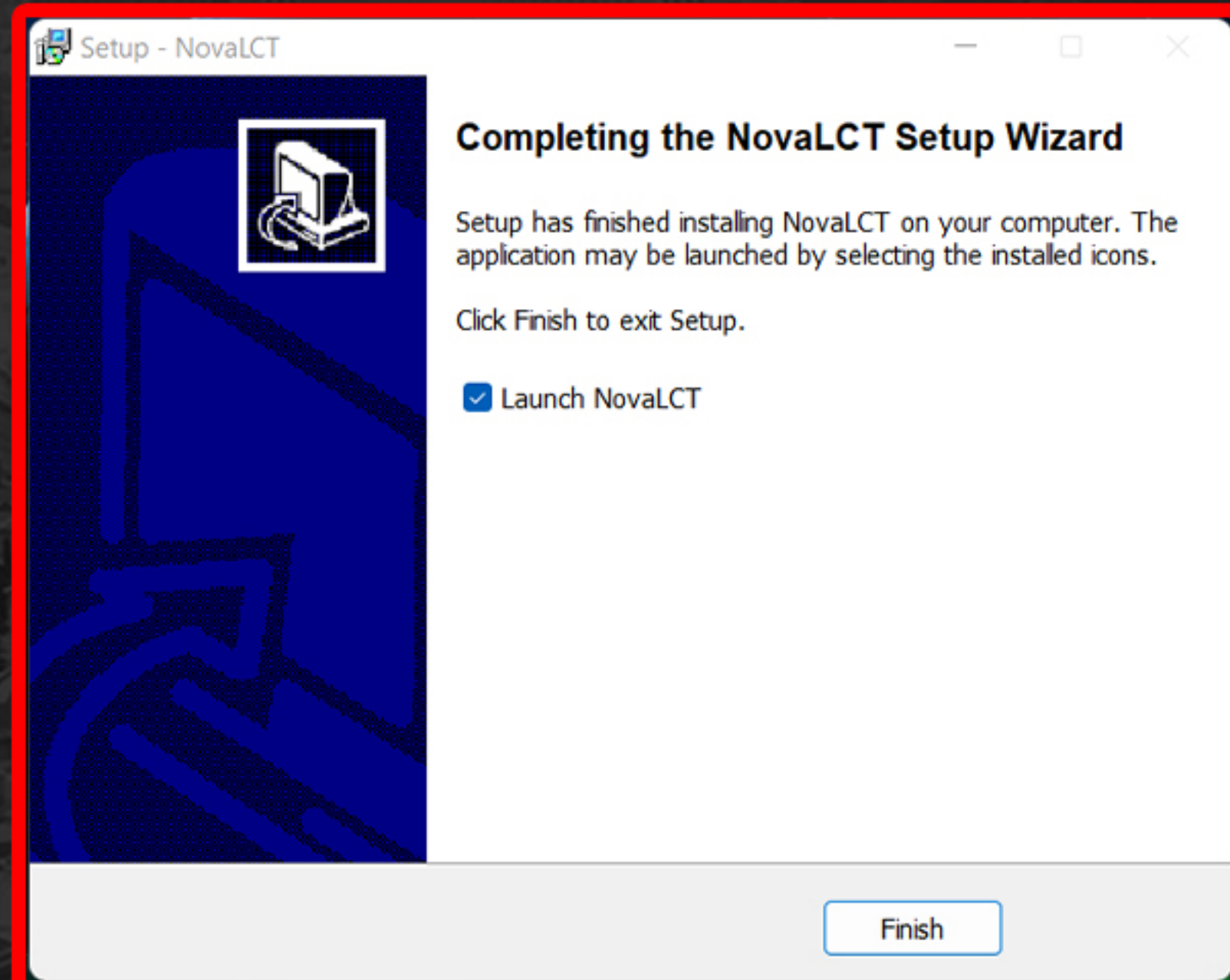
STEP 18

DEPRESS the "Finish" button to complete the driver Installation.



STEP 19

DEPRESS the "Finish" button for NovaLCT.



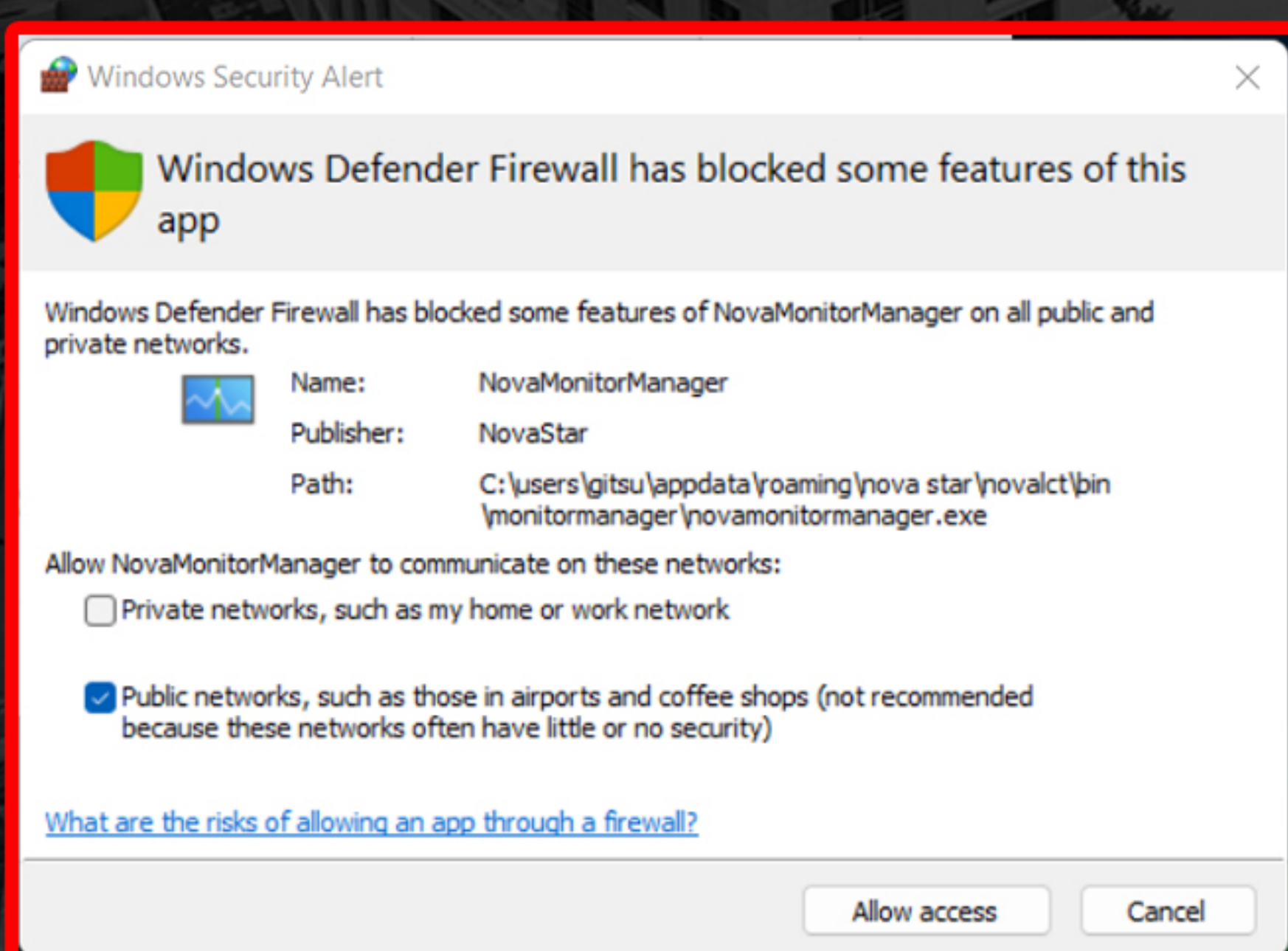
STEP 20

DEPRESS the "Allow Access" button for NovaLCT.



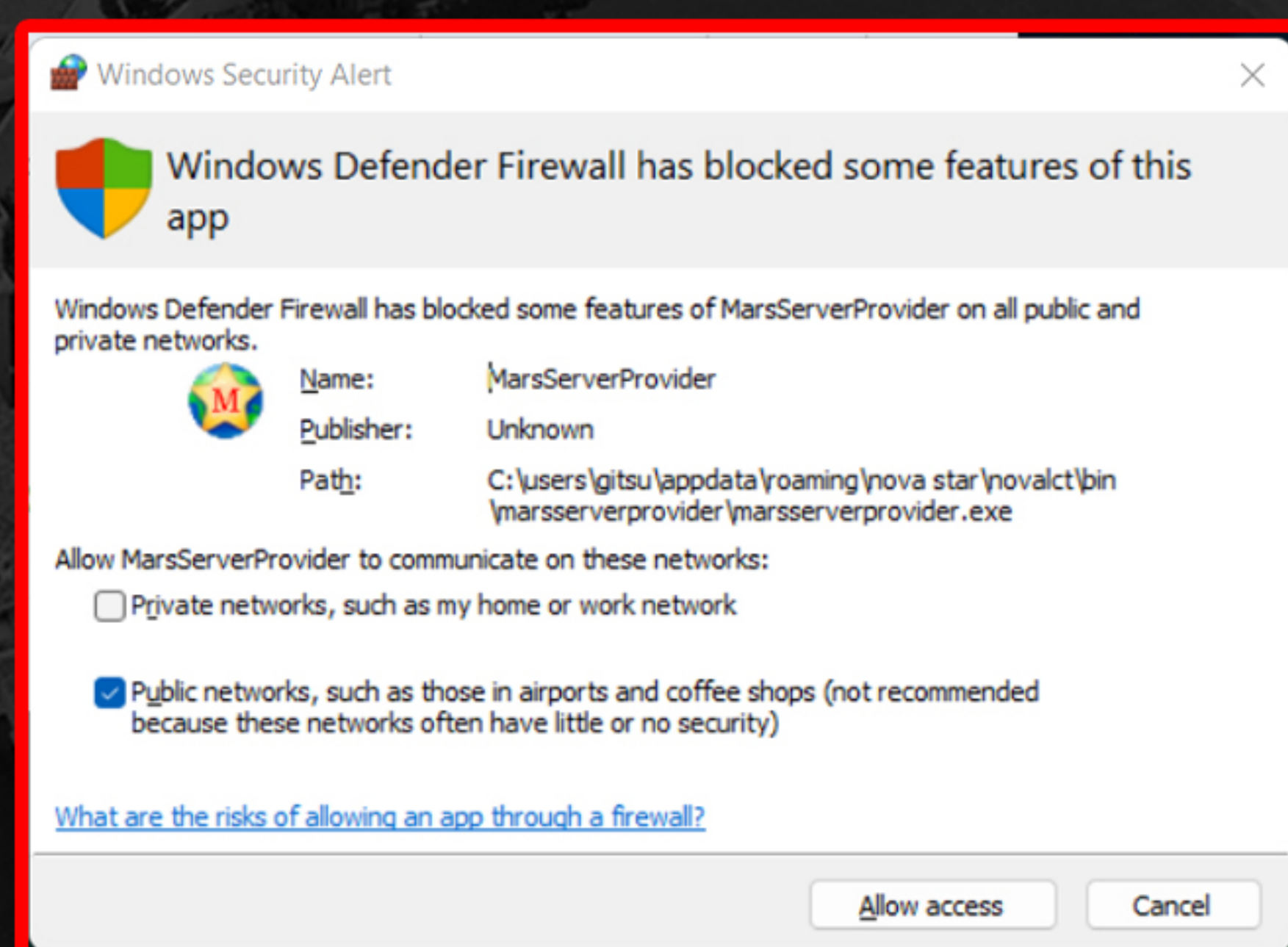
STEP 21

DEPRESS the "Allow Access" button for Nova Monitor Manager.



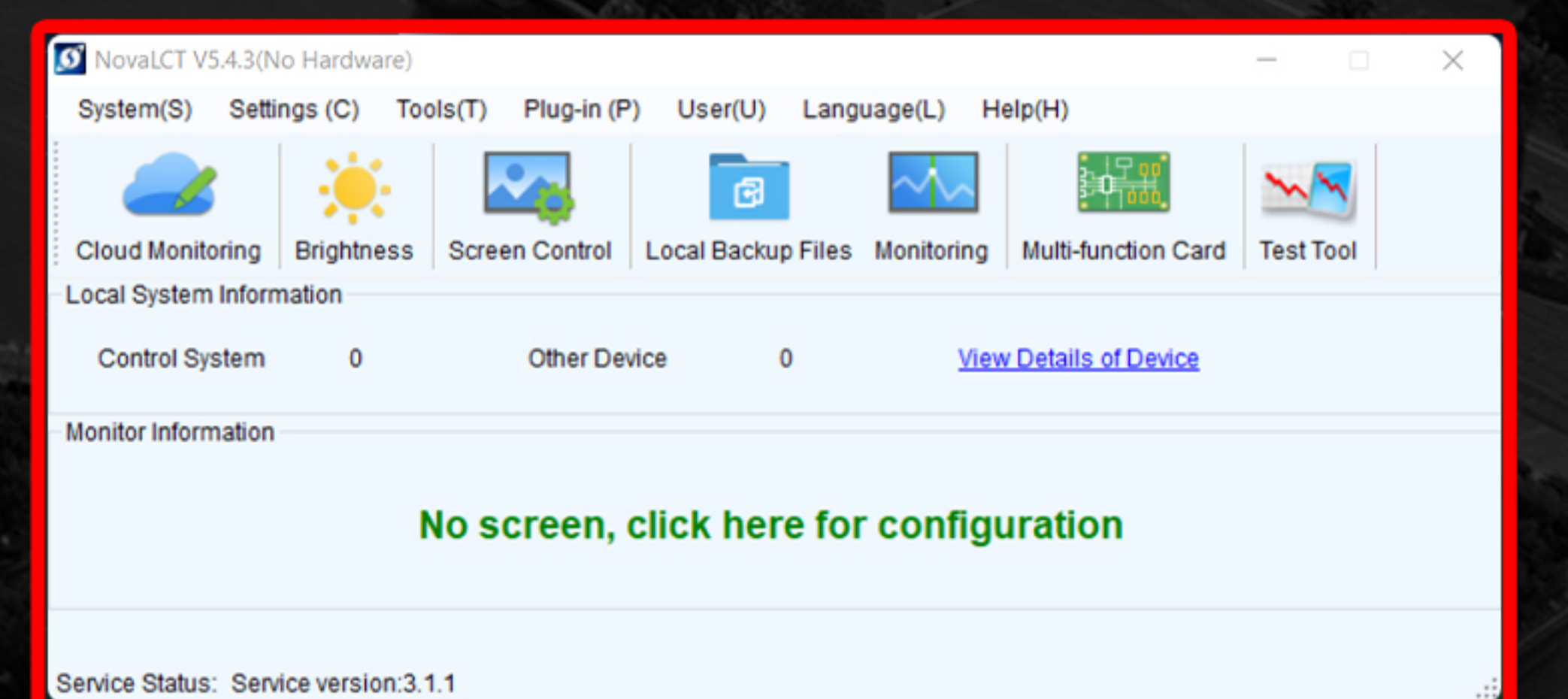
STEP 22

DEPRESS the "Allow Access" button for MarsServerProvider.



STEP 23

NovaLCT should Open after this.



STEP 24